

X4³



LUXURY LINES

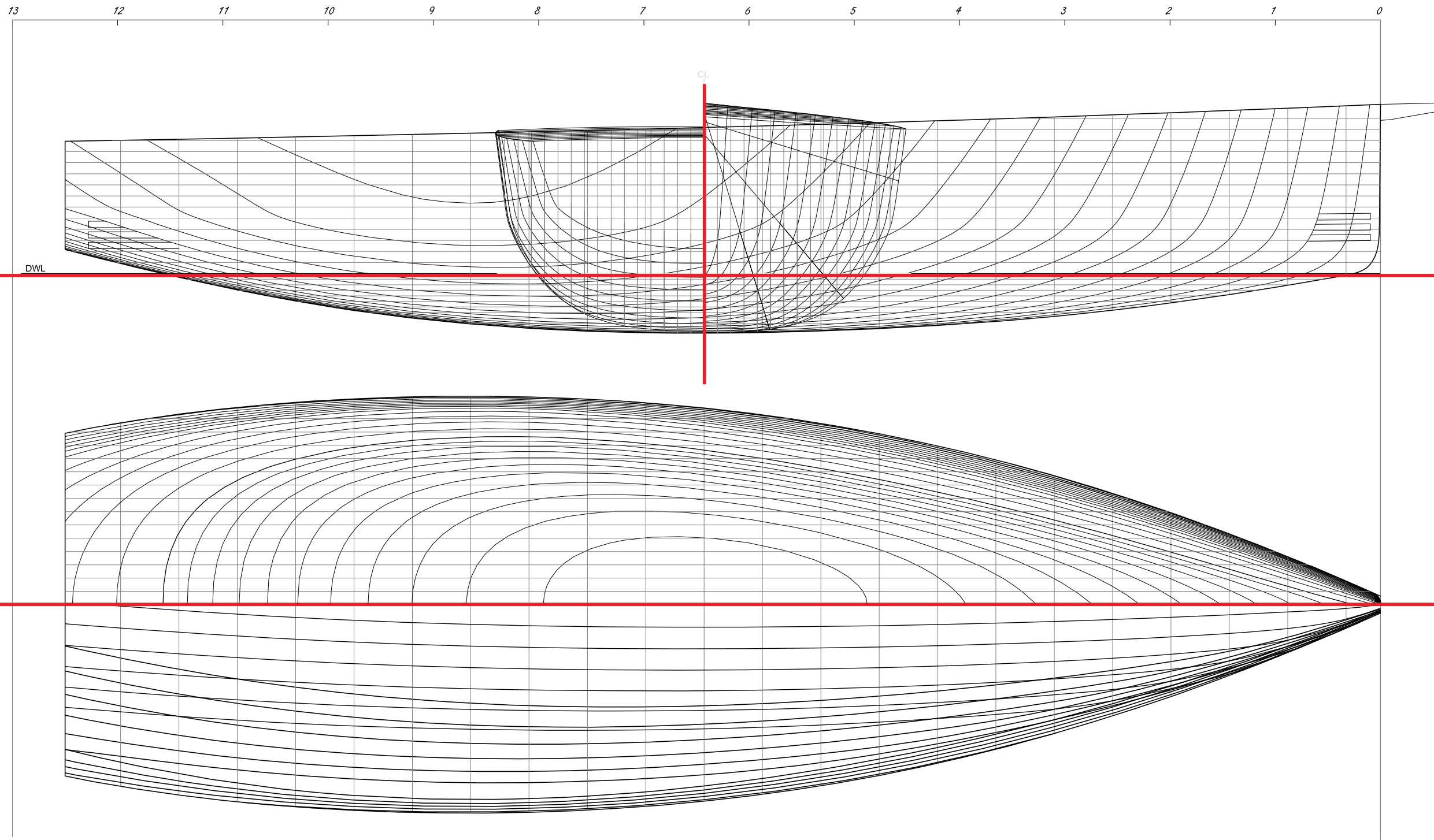
The X4³ is the second model in a new range, aimed at the discerning sailor and his crew. It utilises advanced, proven technology and build techniques which only incorporate first class components, enabling the exploration of new uncharted horizons in comfort.

X-Yachts' background being the builder of the most winning production yachts for more than three decades, is mirrored in the X4³'s technical specification.

Vacuum infused epoxy / sandwich hull, galvanized keel hull girder pioneered by X-Yachts since 1981, epoxy encapsulated low gravity lead keel faired to original keel sections, discontinued rod rigging with hydraulic backstay adjuster, flush recessed and faired hull skin fittings and standard folding propellers all guarantee 'Superb Sailing Pleasure'.

The X4³ offers an easily handled package, ideal for double handed sailing.





THE STORY BEHIND THE DESIGN

The X4³'s hull is designed to meet the demands from sailors who want to enjoy sailing in a wide range of conditions. Achieving comfort when sailing to windward in a rough sea was an essential prerequisite in the X4³ hull design. Generous stability, modern displacement and a powerful yet easy to control sail plan offers smooth sailing through the waves.

Unlike mainstream modern yacht designs, the X4³ is meant to be enjoyable and easy to handle in more than just 'reaching' conditions. A lot of focus was put on the upwind performance and sea keeping when choosing design parameters and various aspect ratios. This combined with the thoroughbred X-Yachts racing heritage delivers a new generation of world class cruising.

The X4³ hull construction incorporates leading edge technology such as vacuum epoxy infused E-glass fibres in a sandwich M-foam construction, giving the hull the rigidity required to put the mast and rig in tension with very little deformation, avoiding "pumping".

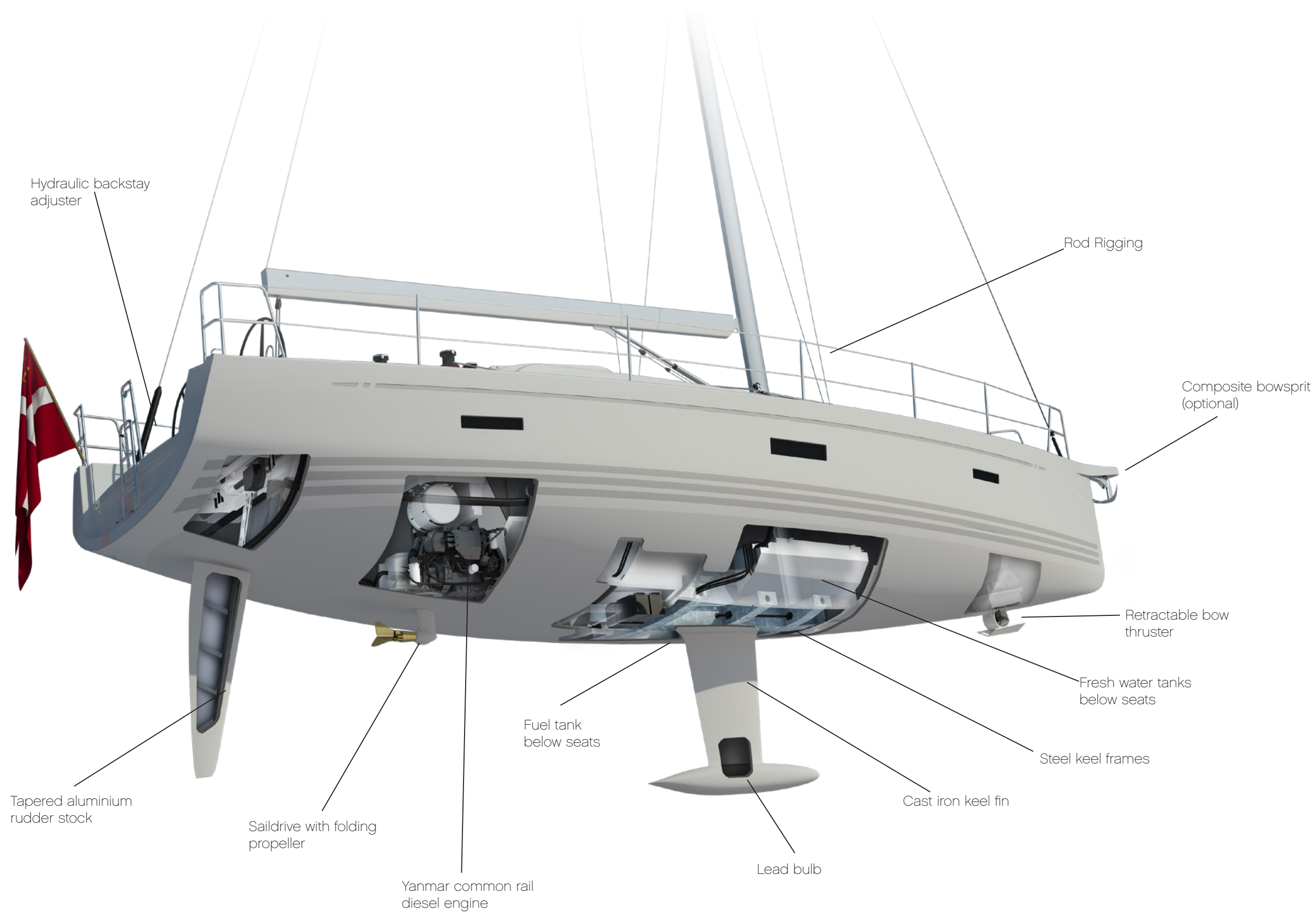
Using E-glass instead of carbon skins delivers high overall strength and stiffness whilst producing a healthy resistance to local impact.

A high ballast ratio instead of an extremely beamy hull shape gives a comfortable stability, wetted surface area and friction drag is minimised, essential for light wind performance.



“One of the best boats
I’ve ever sailed.”

Graham Snook, Yachting Monthly



X-QUALITIES

The X4³ combines many of the qualities found in both the Xc and Xp range into one perfectly formed yacht.

As with all X-Yachts weight distribution is key to performance and comfort at sea. On the X4³ all the heaviest equipment has been placed as low as possible and as close to the centre line as possible. This greatly reduces pitching and slamming as well as increasing the righting moment.

The steel frame synonymous with X-Yachts also features on the X4³. The steel frame is bolted to the inside of the hull and takes all the loads from the keel and mast. This keeps the yacht stiff, strong and safe.

The X4³ has three keel options to choose from, all of which feature a lead bulb and are encapsulated in a reinforced epoxy e-glass shell for improved performance.

The recessed through hull fittings, folding propeller and retractable bow thruster all ensure minimal drag and resistance.

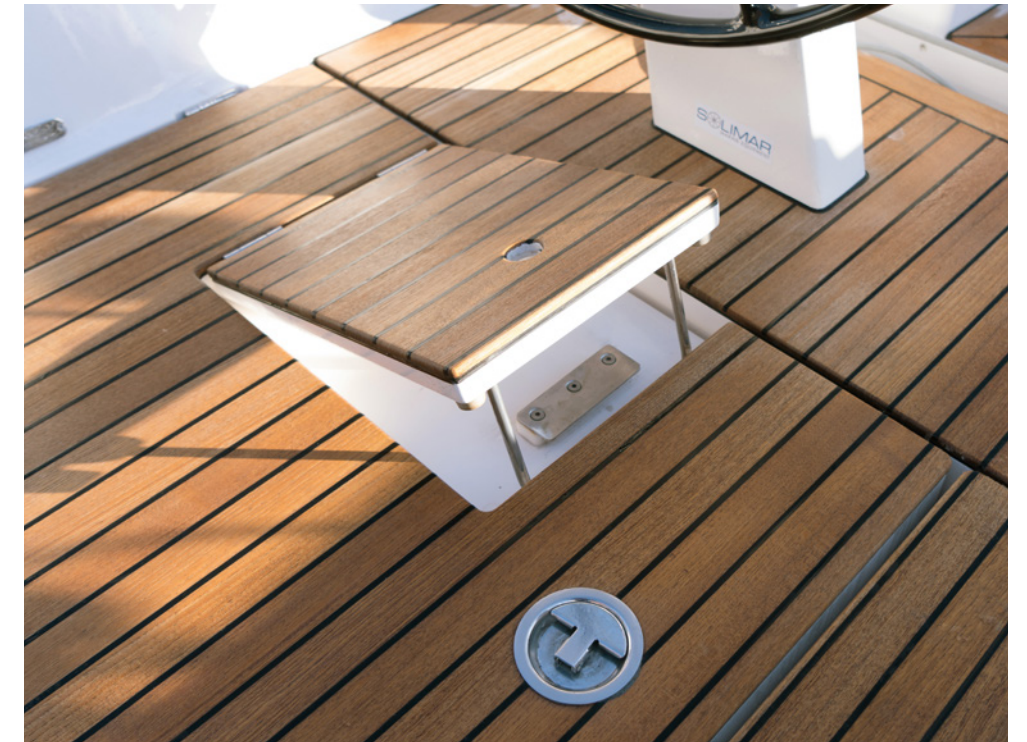
Whether opting for the standard Aluminium rig or upgrading to the carbon mast, rig control is hugely important. The X4³ is fitted with discontinuous rod rigging to allow for a high tension rig that gives good control of the rig and sail shape.

The engineering installations on board the X4³, are all fitted by our team of engineers with over 30 years experience ensuring everything is precision fitted to the highest standards.

All the deck equipment on board is supplied by industry leading suppliers ensuring every aspect of your X4³ is reliable, easy to use and safe.



Optional teak on side decks.



CLEAN & FUNCTIONAL

The X4³ rewards the owner with a deck and rigging layout, designed for the discerning sailor.

Fractional double spreader, tapered silver anodized aluminium mast stepped on steel frame has been specifically designed and engineered for the X4³. Carbon mast is optional.

The X4³ is fitted with discontinuous rod rigging throughout with rod turnbuckles. Stainless steel chainplates for headstay, center backstay and shrouds.

The double ended mainsheet system with a track recessed into the cockpit floor ensures mainsail controls are within easy reach of the helmsman, while the coachroof mounted jib tracks aid pointing.

Halyards and control lines are led aft, concealed below deck whilst the flush deck hatches and portlights add to the sleek clean lines and create a clutter free environment.

Far Above: Integrated teak foot chocks provide a safe stable platform for the helmsman to stand when the boat is heeled. Floor chocks can be folded flush into the cockpit floor when not in use.

Above: Two spacious cockpit lockers, and a large lazarette, with two deck hatches, offer ample storage with one dedicated for the life raft.

MULTIPLE CHOICE

The X4³ comes with a variety of optional additions on deck to ensure you can perfectly tailor the yacht to suite your personal needs and style.



TEAK DECKS

Laid teak decks with seamless joints can be added to the side decks and coachroof.



COMPOSITE WHEELS

Composite wheels give a modern look to the cockpit of the X4³



FIXED WINDSCREEN

The optional canvas sprayhood fits neatly into a recessed trough when not in use. For extra protection from the elements you can also opt for a fixed windscreen with the canvas sprayhood fixed to this.



FOLDING CLEATS

Upgrade to folding mooring cleats for a modern sleek style



COLOUR VARIATIONS

Choose between light grey or white hull with either dark grey, light grey or navy blue waterlines



BIMINI & COCKPIT TENT

The X4³ has a range of bimini and cockpit tent options. The cockpit tent attaches to the back end of the sprayhood and can either be used as a full tent with sides or as a simple and easy to fit bimini.



ELECTRIC WINCHES

The Harken winches can be upgraded to be electrically powered for easy short handed sailing



NAVIGATION EQUIPMENT

We factory fit a range of state of the art navigation equipment.

BOWSPRIT OPTIONS



Standard GRP cowl with integrated anchor fitting.



Optional carbon bowsprit with integrated anchor fitting.



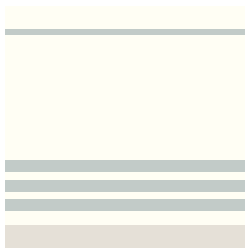
Optional carbon bowsprit, shown without anchor.



HULL TRIM STRIPES

The standard X4³ comes in a white gelcoat with light grey (RAL7035) waterlines and sheerline stripes.

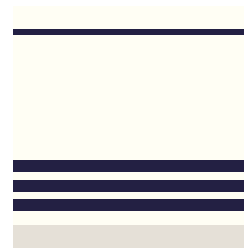
However we have options for the boat to come in a number of colour-ways displayed below.



White hull with light grey stripes



White hull with black grey stripes



White hull with dark blue stripes



Light grey hull with pure white stripes

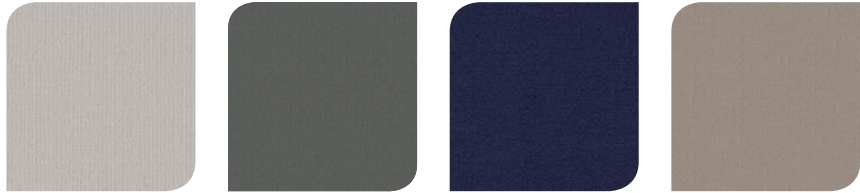


Black grey hull with pure white stripes

HULL STYLE OPTIONS

EXTERIOR FABRICS

Choose between light grey (Swela 37362), dark grey (Swela 37365) or dark blue (Swela 37395) for sprayhood, bimini, cockpit tent, cockpit cushions, boom cover, forestay cover, cockpit table and wheel covers. Other colours on request.



Light grey (Swela 37362) Dark grey (Swela 37365) Dark blue (Swela 37395) Light brown (Swela 37329)



Above: Standard white hull with light grey waterline and sheer line stripes.



Above: Standard teak on cockpit sole and seats, and the optional composite wheels.



Far Above: The Stainless Steel swimming ladder stows neatly behind the optional fold down bathing platform.

Above: A choice of cockpit tables means you can tailor the space to suite your needs.

OUTDOOR LIVING

The cockpit space on board the X43 is not only designed to be functional and safe while at sea but has also to create a luxurious outdoor living space.

The twin wheels and recessed mainsheet track mean the cockpit area is spacious and uncluttered. The teak cockpit sole and seats come as standard on the X43.

There is a choice of cockpit tables available including fixed versions with integrated chart plotter and instruments or a

removable easily stowable version. Both offer plenty of space for al-fresco dining.

The optional fold down swimming platform creates a perfect area for relaxing as well as easy access from the water or dinghy. A deck shower is fitted as standard.

The high back rests not only offer protection while at sea but also create a comfy seating area, especially with the addition of the fitted cockpit cushions.



SPACIOUS LIVING

Danish design and architecture is famous for its clean, timeless style. It showcases luxury whilst also being functionally designed to work either out on the open seas or moored up in harbour.

Superior quality, detailed interior carpentry and materials used sets it apart from mass produced boats, producing an exquisite, natural interior.

Numerous deck and hull portlights allow for ample light to flood in, gifting the interior with a bright and roomy ambiance.

Plentiful storage space throughout allows for an uncluttered, 'live on board' lifestyle, giving you a place one can retreat to when the weather outside is less forgiving.



SALOON

The spacious saloon has a large dining table with integrated wine bottle compartment on port side and can accommodate 6 guests comfortably.

Stylish bookshelves located behind the nav station and saloon seating together with the upper cabinets (bottom hinged doors) on either side of the saloon provide ample storage for your items.

The nav station is the X4³'s communication centre as well as the main hub for the yacht's electrical systems. The standard layout offers a forward facing nav station (Image above features Layout Option 1 featuring aft facing nav station)



OWNER'S CABIN

Owner's cabin located in front of the mast comes with plentiful storage throughout including the two large double wardrobes with shelves and hangers and storage space under the double berth.

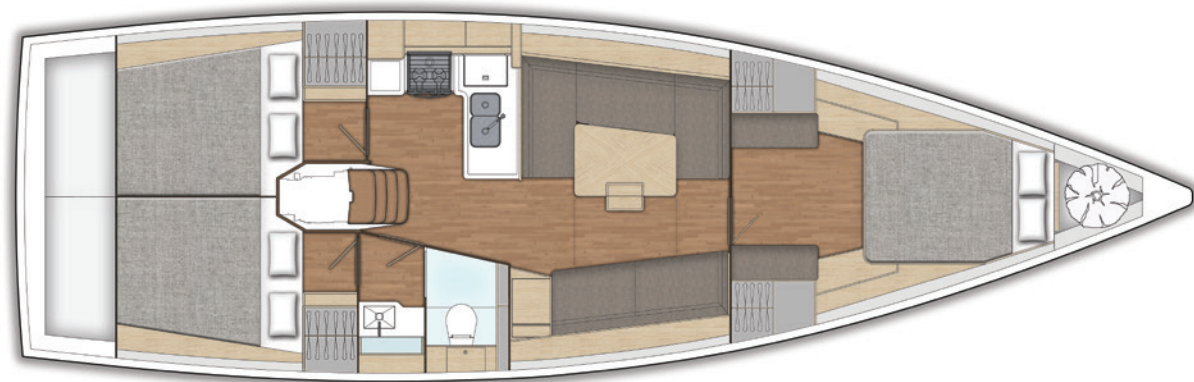
All berths have marine plywood support with ventilation holes for improved comfort and air circulation.

The X4³ comes as standard with Nordic Oak furniture and with teak without koto laminated floor.

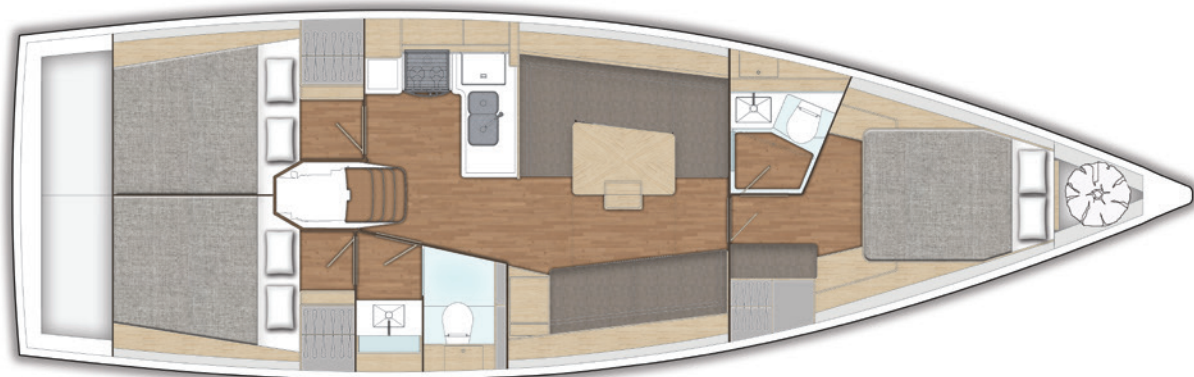
The optional owner's cabin heads and shower replaces the port wardrobe space and creates a luxurious self-contained owner suite.



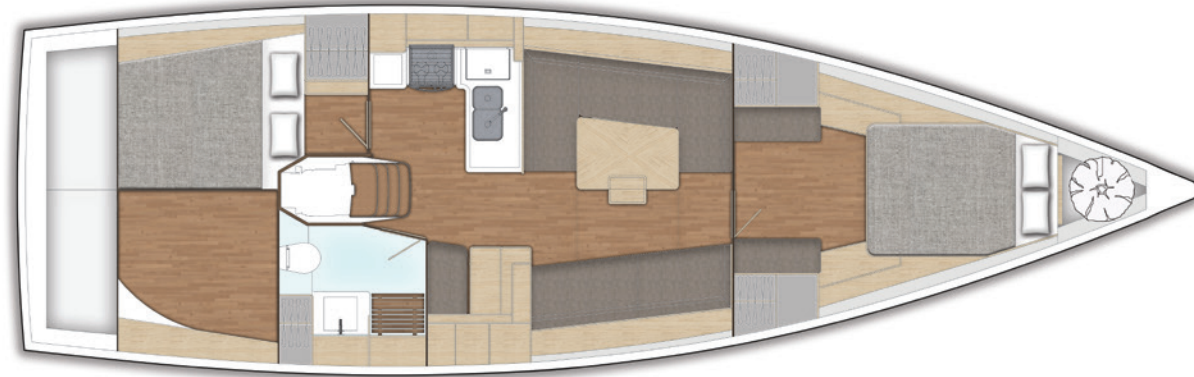
INTERIOR LAYOUTS



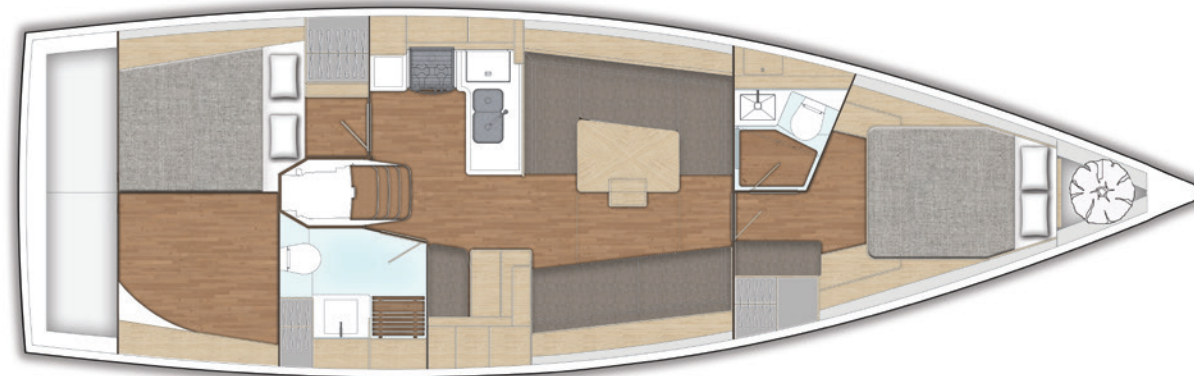
Standard version - 3 cabin / 1 head



Option 1 - 3 cabin / 2 heads



Option 2 - 2 cabin / 1 head



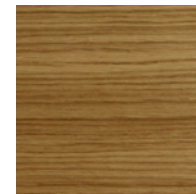
Option 3 - 2 cabin / 2 heads

These descriptions, illustrations and dimensions are not contractual binding.

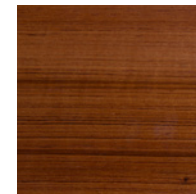
INTERIOR SURFACES

The X4³ comes as standard with Nordic Oak furniture, teak without koto laminated floor and white corian tops in the galley. However with many options to choose from you can create an interior style that suites you.

WOOD SURFACE

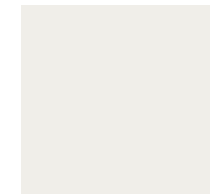


Oak
(Standard)



Teak

GALLEY WORK TOPS

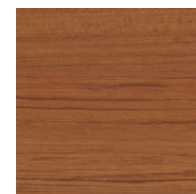


Camoan White
Corian
(Standard)

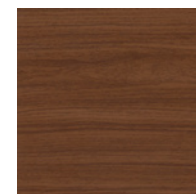


Black Quartz
Corian

FLOORBOARDS

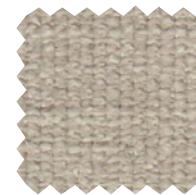


Teak without koto
(Standard)



Walnut

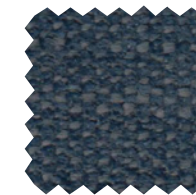
FLECKLESS FABRICS



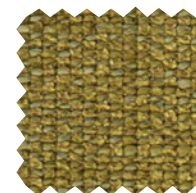
Just Fleckless
01 Nature



Just Fleckless
05 Camel



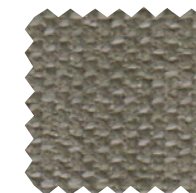
Just Fleckless
10 Navy



Just Fleckless
403 Bambus



Just Fleckless
710 Moon Grey



Just Fleckless
750 Olive Grey

MICRO FIBRE FABRICS



Alsace Blue



Alsace Ivory



Alsace Sand



Nubilux 709
Argent

FLECKLESS FABRICS

The material of this upholstery fabric can be easily cleaned with a cotton cloth and distilled water, since each individual yarn was already coated with a newly developed stain guard before processing. This effective precautionary measure does not however require any compromise in feel or visual appearance.

The proof lies in the fine structural pattern and super-soft texture of Just Fleckless.

85% Polyester, 15% Viscose. Weight: 710 g +/- 5%.
Durability with a Martindale of 80,000.



X4³ DIMENSIONS

Overall Length	12.91 m	42.4 ft
Hull length	12.50 m	41.0 ft
LWL	11.31 m	37.1 ft
Beam	3.95 m	13.0 ft
Standard draft	2.20 m	7.2 ft
Shallow draft (L-keel)	1.85 m	6.1 ft
Deep draft (T-keel)	2.50 m	8.2 ft
Ballast (standard)	3,800 kg	8,378 lbs
Displacement (light)	8,850 kg	19,511 lbs

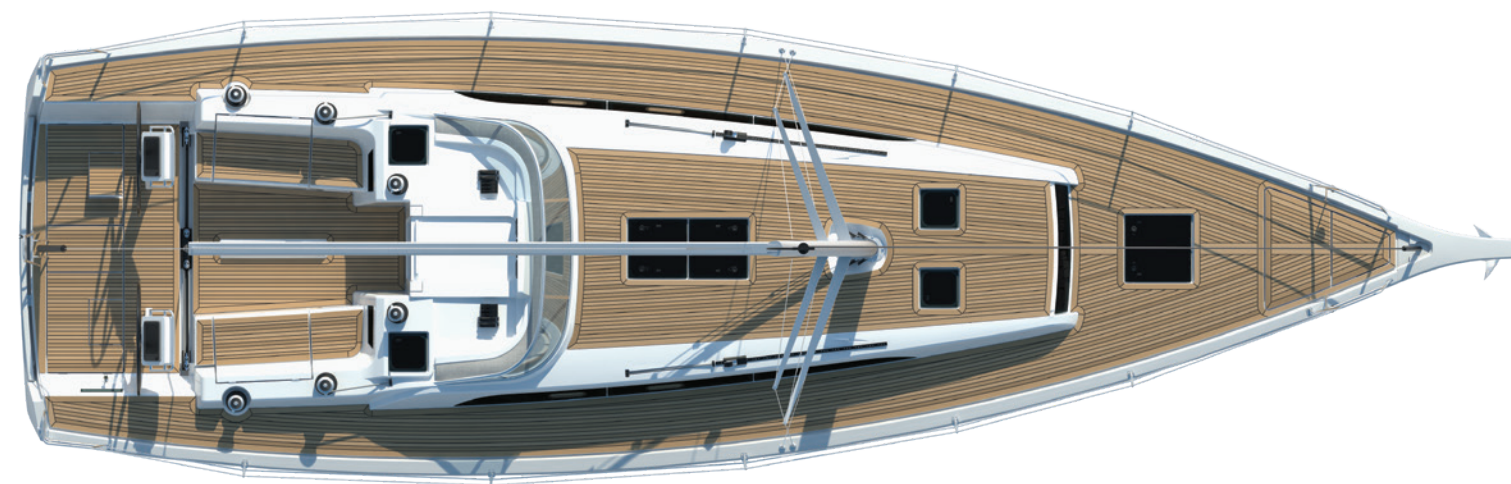
ENGINE/TANKS

Engine diesel	33 kW	45 HP
Fuel tank	200 Ltr	52.8 Gal (US)
Water tank	340 Ltr	89.8 Gal (US)

SAIL AREAS

Mainsail (aluminium mast)	54.0 m ²	581.3 ft ²
Genoa (106%)	43.0 m ²	462.8 ft ²
Spinnaker	150 m ²	1614.6 ft ²
Spinnaker (asymmetric)	101.14 m ²	1,089 ft ²

Sail areas are based on standard mast. Fractional, tapered silver anodized aluminium mast is standard 2-spreader aluminium mast. Optional carbon mast/boom on request.



X-Yachts[®]
WORLD CLASS SINCE 1979